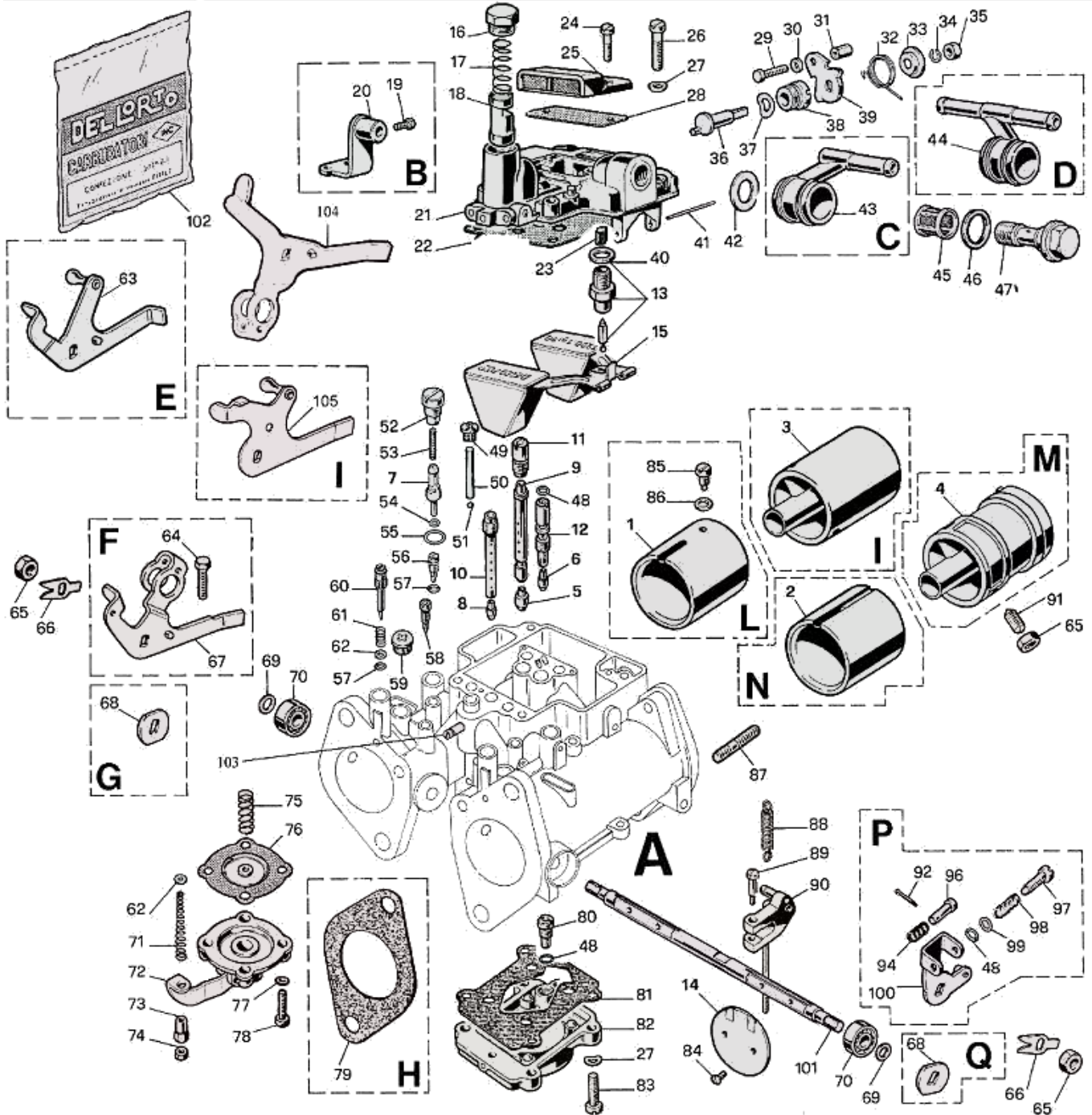


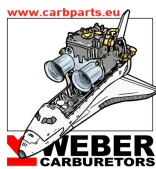


## DELLORTO 40 DHLA - exploded view



<https://www.carbparts.eu>

Prices and product availability are subject to change



**CarbDeal**  
Selling carburetor parts since 2005



## DELLORTO 40 DHLA - Parts list

No	Part No	Price	Pcs	Description	No	Part No	Price	Pcs	Description
1	8564	€ 0		DHLA 48 choke	52	10747	€ 12.4		Pump jet holder
2	7956	€ 10.8		DHLA 45/48 choke	53	10748	€ 4.3		Pump jet filter/spring
2	8383	€ 10		DHLA 40 choke	54	6173	€ 0.9		Pump jet O ring
3	8011	€ 0		DHLA 45/48 Aux. Venturi	55	6426	€ 0.8		Pump jet cap fibre washer
4	7848	€ 0		DHLA 40 Aux. Venturi	56	9926	€ 4.3		Air bleed screw
5	7484	€ 2.9		Main Jet	57	8678	€ 0.8		Air bleed screw O ring
6	7644	€ 2.9		Idle jet	58	7959	€ 4.3		Vacuum blanking screw
7	7851	€ 7.5		Pump jet	59	8857	€ 9.6		G/H prog. blanking screw
8	3315	€ 0		Starter jet	60	9656	€ 7.9		Mixture screw 48/45/40H
9	7772	€ 15.3		Main emulsion tube	61	9336	€ 1.8		Mixture screw spring
10	7482	€ 0		Starter emulsion tube	62	8260	€ 0.2		Mixture screw washer
11	7485	€ 2.9		Air corrector	63	10381	€ 15		DHLA late alfa lever
12	7850	€ 10.9		Idle holder/emulsion tube	64	9754	€ 9.1		DHLA throttle stop screw
13	8809	€ 11.3		Needle valve, viton tipped	65	6423	€ 1.9		Spindle nut
13	8811	€ 11.3		Needle valve, metal tipped	66	6581	€ 1.5		Spindle nut lock washer
14	7481	€ 0		Throttle butterfly DHLA 40	67	10714	€ 29.2		Short Lotus lever
14	8010	€ 0		Throttle butterfly DHLA 45	68	7958	€ 3.1		Spindle end cover
14	8563	€ 0		Throttle butterfly DHLA 48	69	7537	€ 2.3		Spindle washer
15	7298	€ 60.1		Float assy	70	7490	€ 19.3		Spindle bearing
16	7501	€ 14.4		Choke piston cover bolt	71	7627	€ 0		Pump rod spring
17	7413	€ 3.8		Choke piston spring	72	8058	€ 0		40/45/48 E Pump Cover assy
18	9609	€ 0		Choke piston	73	7625	€ 4.6		Pump rod nut
19	6434	€ 1.8		Choke outer cable clamp screw	74	6390	€ 0.8		Pump rod lock nut
20	7488	€ 16.9		Choke cable support	75	7626	€ 2.4		Diaphragm Spring
21	9818	€ 0		Top cover casting	76	7515	€ 7.5		Pump Diaphragm
22	9358	€ 4.8		Top cover casting gasket	77	5011	€ 0.9		Spring washer (pump cover)
22	9220	€ 6.6		Top cover casting gasket (antisurge)	78	6429	€ 1.4		Screw (pump cover)
23	9498	€ 0		Needle valve filter	79	8302	€ 3		Alfa carb/inlet manifold gasket
24	7530	€ 1.8		Vent cover screw	80	7542	€ 16.9		Pump non-return valve
25	7549	€ 13.4		Vent cover	81	7509	€ 7.2		Pump body gasket
26	6430	€ 1.6		Top cover screw	82	7550	€ 0		DHLA45E Pump body
27	4997	€ 0.8		Top cover spring washer	83	7526	€ 1.3		Pump body screw
28	7511	€ 3.6		Vent cover gasket	84	6416	€ 1.8		Butterfly screw
29	7062	€ 7.9		Choke inner cable clamp	85	6449	€ 4.8		DHLA48 choke retaining screw
30	6850	€ 1		Cable clamp washer	86	4957	€ 0.8		Spring washer (choke screw)
31	6432	€ 7.2		Choke cable clamp nut	87	7151	€ 7.2		Trumpet stud
32	7854	€ 3.3		Choke cable return spring	88	8610	€ 0		Throttle return spring (competition)
33	7838	€ 5		Choke spring cup washer	88	7957	€ 3.3		Throttle return spring (std)
34	4957	€ 0.8		Spring washer	89	6887	€ 3.1		Cap screw
35	2906	€ 1.1		Choke spring retaining nut	90	8307	€ 26.7		DHLA40 pump rod assy
36	9610	€ 33.8		Choke actuator cam	91	7507	€ 6.3		Venturi grub screw
37	7837	€ 1.1		Actuator cam spring washer	92	3793	€ 1.1		Split pin (balance lever)
38	9611	€ 0		Actuator cam retaining bush	93	9752	€ 5.9		Balance lever pin
39	7341	€ 3.3		Choke actuator lever	93	7496	€ 5.9		Balance lever pin
40	6425	€ 1.1		Needle valve washer	94	2638	€ 1.4		Balance lever spring
41	7503	€ 4.5		Float assy pivot pin	95	11529	€ 0		Late Alfa balance lever
42	7663	€ 0.3		Banjo fibre washer, inner	96	7496	€ 5.9		Balance lever pin
43	7862	€ 0		Fuel banjo, single 45 degree	97	6898	€ 4.5		Throttle stop screw
43	8071	€ 23.6		Fuel banjo, single 90 degree	98	4670	€ 1.4		Throttle stop screw spring
43	7660	€ 39		Fuel banjo, single standard	99	4650	€ 0.8		Washer
44	8072	€ 23.6		Fuel banjo, double 90 degree	100	8304	€ 14.2		Lotus balance lever
44	7661	€ 41		Fuel banjo, double standard	101	7668	€ 0		DHLA 40 spindle
45	1419	€ 7.2		Banjo fuel filter	101		€ 0		??
46	7662	€ 0.3		Banjo fibre washer, outer	101	8604	€ 82.8		DHLA 48 spindle
47	7659	€ 7.5		Banjo bolt	101	8352	€ 0		DHLA 45 spindle
48	7540	€ 1.1		O ring	102		€ 0		??
49	7513	€ 7.2		Cap screw	103		€ 0		
50	7525	€ 7.2		Pump jet weight	104	??	€ 0		
51	6415	€ 3		Pump jet ball bearing	105		€ 0		??

<https://www.carbparts.eu>

Prices and product availability are subject to change

