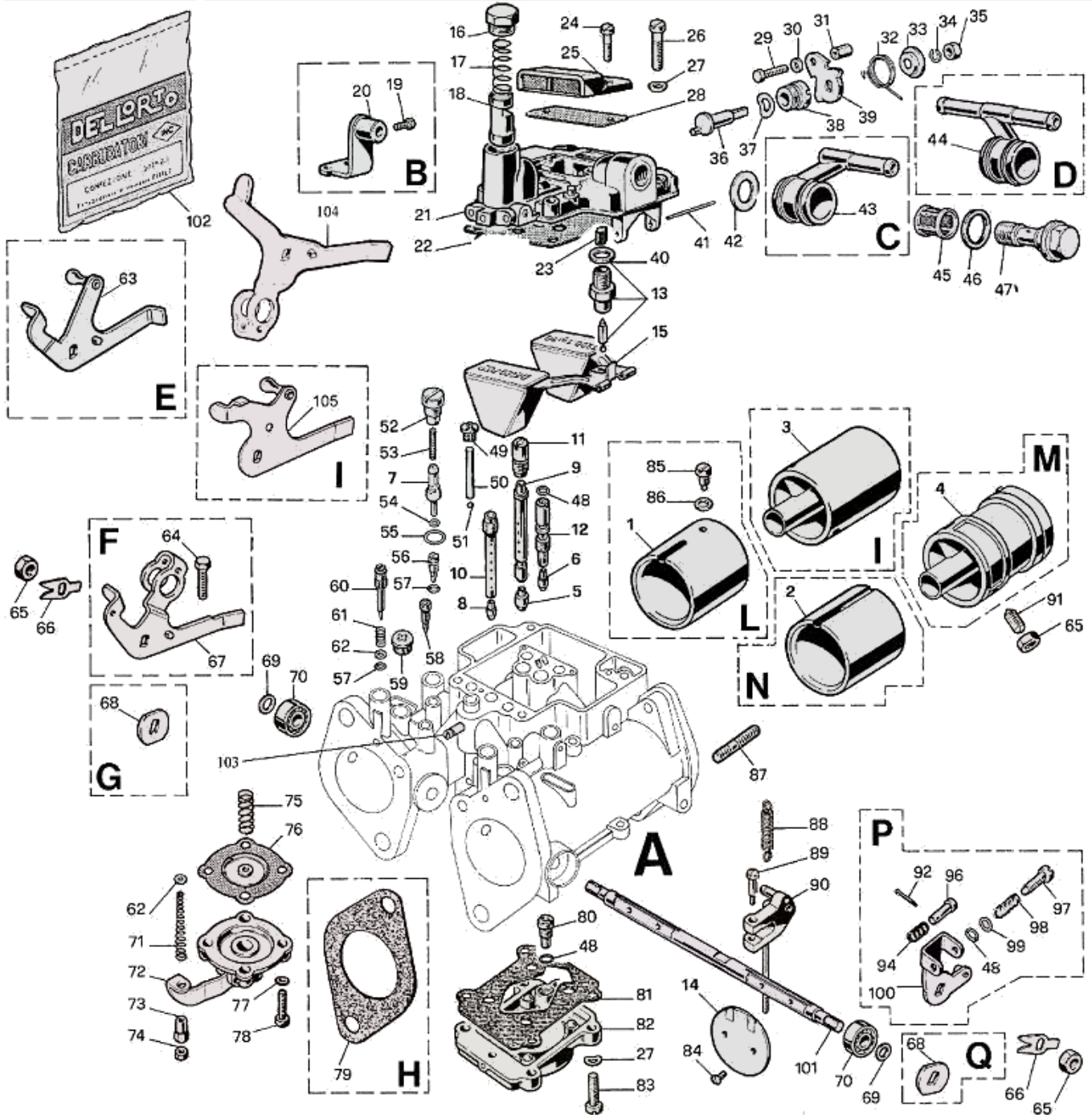


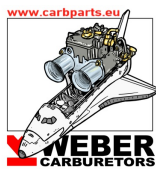


DELLORTO 40 DHLA - exploded view



<https://www.carbparts.eu>

Prices and product availability are subject to change



CarbDeal
Selling carburetor parts since 2005



DELLORTO 40 DHLA - Parts list

No	Part No	Price	Pcs	Description	No	Part No	Price	Pcs	Description
1	8564	£ 0		DHLA 48 choke	52	10747	£ 10.7		Pump jet holder
2	7956	£ 9.4		DHLA 45/48 choke	53	10748	£ 3.8		Pump jet filter/spring
2	8383	£ 8.7		DHLA 40 choke	54	6173	£ 0.8		Pump jet O ring
3	8011	£ 0		DHLA 45/48 Aux. Venturi	55	6426	£ 0.7		Pump jet cap fibre washer
4	7848	£ 0		DHLA 40 Aux. Venturi	56	9926	£ 3.8		Air bleed screw
5	7484	£ 2.5		Main Jet	57	8678	£ 0.7		Air bleed screw O ring
6	7644	£ 2.5		Idle jet	58	7959	£ 3.8		Vacuum blanking screw
7	7851	£ 6.5		Pump jet	59	8857	£ 8.3		G/H prog. blanking screw
8	3315	£ 0		Starter jet	60	9656	£ 6.9		Mixture screw 48/45/40H
9	7772	£ 13.3		Main emulsion tube	61	9336	£ 1.6		Mixture screw spring
10	7482	£ 0		Starter emulsion tube	62	8260	£ 0.1		Mixture screw washer
11	7485	£ 2.5		Air corrector	63	10381	£ 13		DHLA late alfa lever
12	7850	£ 9.5		Idle holder/emulsion tube	64	9754	£ 7.9		DHLA throttle stop screw
13	8809	£ 9.8		Needle valve, viton tipped	65	6423	£ 1.7		Spindle nut
13	8811	£ 9.8		Needle valve, metal tipped	66	6581	£ 1.3		Spindle nut lock washer
14	7481	£ 0		Throttle butterfly DHLA 40	67	10714	£ 25.3		Short Lotus lever
14	8010	£ 0		Throttle butterfly DHLA 45	68	7958	£ 2.7		Spindle end cover
14	8563	£ 0		Throttle butterfly DHLA 48	69	7537	£ 2		Spindle washer
15	7298	£ 52.1		Float assy	70	7490	£ 16.7		Spindle bearing
16	7501	£ 12.5		Choke piston cover bolt	71	7627	£ 0		Pump rod spring
17	7413	£ 3.3		Choke piston spring	72	8058	£ 0		40/45/48 E Pump Cover assy
18	9609	£ 0		Choke piston	73	7625	£ 4		Pump rod nut
19	6434	£ 1.6		Choke outer cable clamp screw	74	6390	£ 0.7		Pump rod lock nut
20	7488	£ 14.6		Choke cable support	75	7626	£ 2.1		Diaphragm Spring
21	9818	£ 0		Top cover casting	76	7515	£ 6.5		Pump Diaphragm
22	9358	£ 4.1		Top cover casting gasket	77	5011	£ 0.8		Spring washer (pump cover)
22	9220	£ 5.7		Top cover casting gasket (antisurge)	78	6429	£ 1.2		Screw (pump cover)
23	9498	£ 0		Needle valve filter	79	8302	£ 2.6		Alfa carb/inlet manifold gasket
24	7530	£ 1.6		Vent cover screw	80	7542	£ 14.6		Pump non-return valve
25	7549	£ 11.6		Vent cover	81	7509	£ 6.2		Pump body gasket
26	6430	£ 1.4		Top cover screw	82	7550	£ 0		DHLA45E Pump body
27	4997	£ 0.7		Top cover spring washer	83	7526	£ 1.2		Pump body screw
28	7511	£ 3.1		Vent cover gasket	84	6416	£ 1.6		Butterfly screw
29	7062	£ 6.9		Choke inner cable clamp	85	6449	£ 4.1		DHLA48 choke retaining screw
30	6850	£ 0.9		Cable clamp washer	86	4957	£ 0.7		Spring washer (choke screw)
31	6432	£ 6.2		Choke cable clamp nut	87	7151	£ 6.2		Trumpet stud
32	7854	£ 2.9		Choke cable return spring	88	8610	£ 0		Throttle return spring (competition)
33	7838	£ 4.3		Choke spring cup washer	88	7957	£ 2.8		Throttle return spring (std)
34	4957	£ 0.7		Spring washer	89	6887	£ 2.7		Cap screw
35	2906	£ 0.9		Choke spring retaining nut	90	8307	£ 23.2		DHLA40 pump rod assy
36	9610	£ 29.3		Choke actuator cam	91	7507	£ 5.4		Venturi grub screw
37	7837	£ 0.9		Actuator cam spring washer	92	3793	£ 0.9		Split pin (balance lever)
38	9611	£ 0		Actuator cam retaining bush	93	9752	£ 5.1		Balance lever pin
39	7341	£ 2.9		Choke actuator lever	93	7496	£ 5.1		Balance lever pin
40	6425	£ 0.9		Needle valve washer	94	2638	£ 1.2		Balance lever spring
41	7503	£ 3.9		Float assy pivot pin	95	11529	£ 0		Late Alfa balance lever
42	7663	£ 0.2		Banjo fibre washer, inner	96	7496	£ 5.1		Balance lever pin
43	7862	£ 0		Fuel banjo, single 45 degree	97	6898	£ 3.9		Throttle stop screw
43	8071	£ 20.5		Fuel banjo, single 90 degree	98	4670	£ 1.2		Throttle stop screw spring
43	7660	£ 33.8		Fuel banjo, single standard	99	4650	£ 0.7		Washer
44	8072	£ 20.5		Fuel banjo, double 90 degree	100	8304	£ 12.3		Lotus balance lever
44	7661	£ 35.6		Fuel banjo, double standard	101	7668	£ 0		DHLA 40 spindle
45	1419	£ 6.2		Banjo fuel filter	101		£ 0		??
46	7662	£ 0.2		Banjo fibre washer, outer	101	8604	£ 71.9		DHLA 48 spindle
47	7659	£ 6.5		Banjo bolt	101	8352	£ 0		DHLA 45 spindle
48	7540	£ 0.9		O ring	102		£ 0		??
49	7513	£ 6.2		Cap screw	103		£ 0		
50	7525	£ 6.2		Pump jet weight	104	??	£ 0		
51	6415	£ 2.6		Pump jet ball bearing	105		£ 0		??

<https://www.carbparts.eu>

Prices and product availability are subject to change

