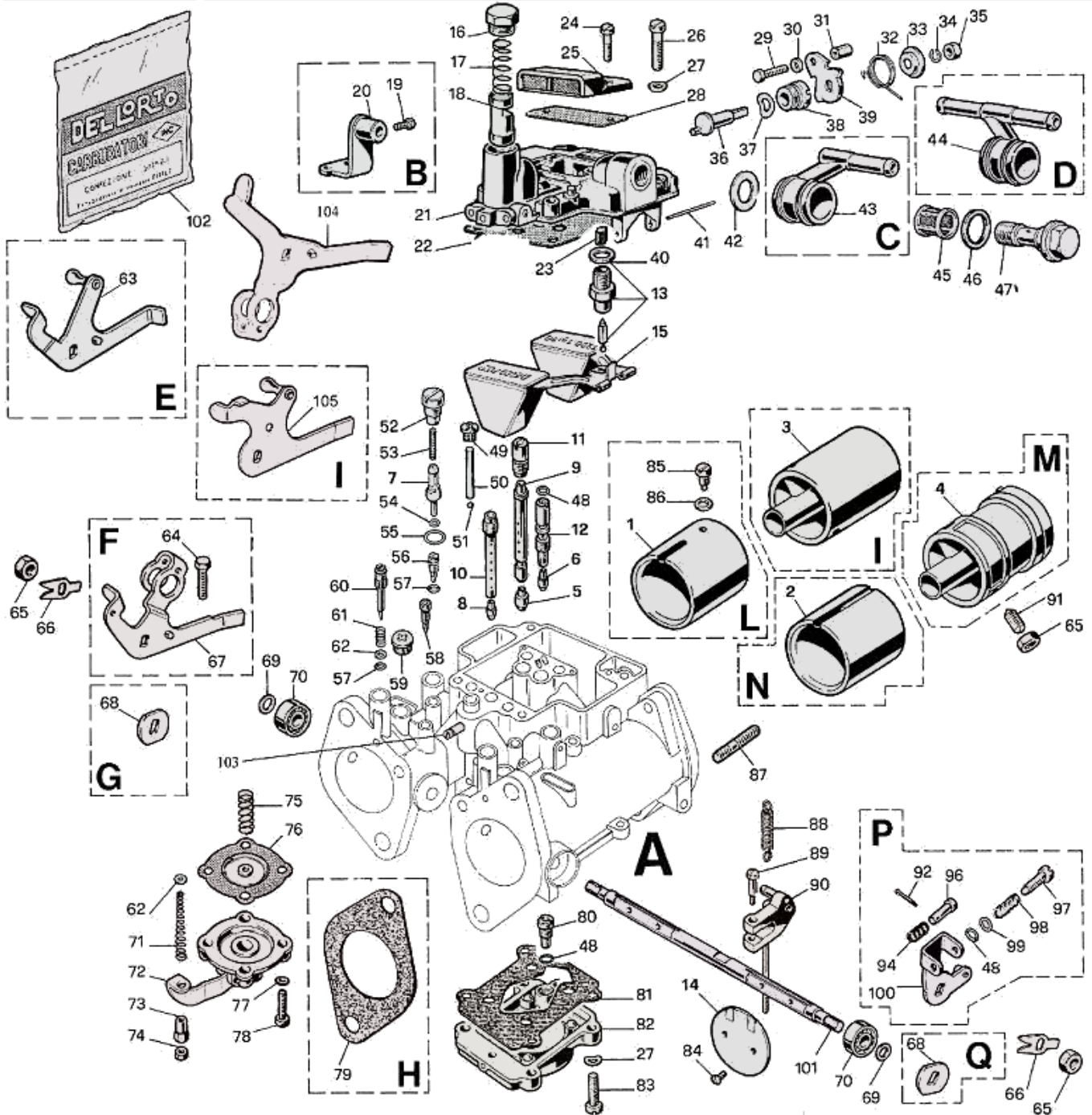


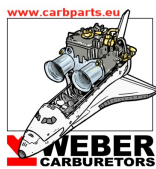


## DELLORTO 40 DHLA - exploded view



<https://www.carbparts.eu>

Prices and product availability are subject to change



**CarbDeal**  
Selling carburetor parts since 2005



## DELLORTO 40 DHLA - Parts list

No	Part No	Price	Pcs	Description	No	Part No	Price	Pcs	Description
1	8564	\$ 0		DHLA 48 choke	52	10747	\$ 14.8		Pump jet holder
2	7956	\$ 13		DHLA 45/48 choke	53	10748	\$ 5.2		Pump jet filter/spring
2	8383	\$ 12		DHLA 40 choke	54	6173	\$ 1.1		Pump jet O ring
3	8011	\$ 0		DHLA 45/48 Aux. Venturi	55	6426	\$ 0.9		Pump jet cap fibre washer
4	7848	\$ 0		DHLA 40 Aux. Venturi	56	9926	\$ 5.2		Air bleed screw
5	7484	\$ 3.5		Main Jet	57	8678	\$ 0.9		Air bleed screw O ring
6	7644	\$ 3.5		Idle jet	58	7959	\$ 5.2		Vacuum blanking screw
7	7851	\$ 9		Pump jet	59	8857	\$ 11.5		G/H prog. blanking screw
8	3315	\$ 0		Starter jet	60	9656	\$ 9.5		Mixture screw 48/45/40H
9	7772	\$ 18.3		Main emulsion tube	61	9336	\$ 2.2		Mixture screw spring
10	7482	\$ 0		Starter emulsion tube	62	8260	\$ 0.2		Mixture screw washer
11	7485	\$ 3.5		Air corrector	63	10381	\$ 18		DHLA late alfa lever
12	7850	\$ 13.1		Idle holder/emulsion tube	64	9754	\$ 10.9		DHLA throttle stop screw
13	8809	\$ 13.5		Needle valve, viton tipped	65	6423	\$ 2.3		Spindle nut
13	8811	\$ 13.5		Needle valve, metal tipped	66	6581	\$ 1.8		Spindle nut lock washer
14	7481	\$ 0		Throttle butterfly DHLA 40	67	10714	\$ 35		Short Lotus lever
14	8010	\$ 0		Throttle butterfly DHLA 45	68	7958	\$ 3.7		Spindle end cover
14	8563	\$ 0		Throttle butterfly DHLA 48	69	7537	\$ 2.7		Spindle washer
15	7298	\$ 72		Float assy	70	7490	\$ 23.1		Spindle bearing
16	7501	\$ 17.3		Choke piston cover bolt	71	7627	\$ 0		Pump rod spring
17	7413	\$ 4.5		Choke piston spring	72	8058	\$ 0		40/45/48 E Pump Cover assy
18	9609	\$ 0		Choke piston	73	7625	\$ 5.5		Pump rod nut
19	6434	\$ 2.2		Choke outer cable clamp screw	74	6390	\$ 1		Pump rod lock nut
20	7488	\$ 20.2		Choke cable support	75	7626	\$ 2.9		Diaphragm Spring
21	9818	\$ 0		Top cover casting	76	7515	\$ 9		Pump Diaphragm
22	9358	\$ 5.7		Top cover casting gasket	77	5011	\$ 1.1		Spring washer (pump cover)
22	9220	\$ 7.9		Top cover casting gasket (antisurge)	78	6429	\$ 1.7		Screw (pump cover)
23	9498	\$ 0		Needle valve filter	79	8302	\$ 3.6		Alfa carb/inlet manifold gasket
24	7530	\$ 2.2		Vent cover screw	80	7542	\$ 20.2		Pump non-return valve
25	7549	\$ 16		Vent cover	81	7509	\$ 8.6		Pump body gasket
26	6430	\$ 1.9		Top cover screw	82	7550	\$ 0		DHLA45E Pump body
27	4997	\$ 0.9		Top cover spring washer	83	7526	\$ 1.6		Pump body screw
28	7511	\$ 4.3		Vent cover gasket	84	6416	\$ 2.2		Butterfly screw
29	7062	\$ 9.5		Choke inner cable clamp	85	6449	\$ 5.7		DHLA48 choke retaining screw
30	6850	\$ 1.2		Cable clamp washer	86	4957	\$ 0.9		Spring washer (choke screw)
31	6432	\$ 8.6		Choke cable clamp nut	87	7151	\$ 8.6		Trumpet stud
32	7854	\$ 4		Choke cable return spring	88	8610	\$ 0		Throttle return spring (competition)
33	7838	\$ 6		Choke spring cup washer	88	7957	\$ 3.9		Throttle return spring (std)
34	4957	\$ 0.9		Spring washer	89	6887	\$ 3.7		Cap screw
35	2906	\$ 1.3		Choke spring retaining nut	90	8307	\$ 32		DHLA40 pump rod assy
36	9610	\$ 40.5		Choke actuator cam	91	7507	\$ 7.5		Venturi grub screw
37	7837	\$ 1.3		Actuator cam spring washer	92	3793	\$ 1.3		Split pin (balance lever)
38	9611	\$ 0		Actuator cam retaining bush	93	9752	\$ 7.1		Balance lever pin
39	7341	\$ 4		Choke actuator lever	93	7496	\$ 7.1		Balance lever pin
40	6425	\$ 1.3		Needle valve washer	94	2638	\$ 1.7		Balance lever spring
41	7503	\$ 5.4		Float assy pivot pin	95	11529	\$ 0		Late Alfa balance lever
42	7663	\$ 0.3		Banjo fibre washer, inner	96	7496	\$ 7.1		Balance lever pin
43	7862	\$ 0		Fuel banjo, single 45 degree	97	6898	\$ 5.4		Throttle stop screw
43	8071	\$ 28.3		Fuel banjo, single 90 degree	98	4670	\$ 1.7		Throttle stop screw spring
43	7660	\$ 46.7		Fuel banjo, single standard	99	4650	\$ 0.9		Washer
44	8072	\$ 28.3		Fuel banjo, double 90 degree	100	8304	\$ 17		Lotus balance lever
44	7661	\$ 49.2		Fuel banjo, double standard	101	7668	\$ 0		DHLA 40 spindle
45	1419	\$ 8.6		Banjo fuel filter	101		\$ 0		??
46	7662	\$ 0.3		Banjo fibre washer, outer	101	8604	\$ 99		DHLA 48 spindle
47	7659	\$ 9		Banjo bolt	101	8352	\$ 0		DHLA 45 spindle
48	7540	\$ 1.3		O ring	102		\$ 0		??
49	7513	\$ 8.6		Cap screw	103		\$ 0		??
50	7525	\$ 8.6		Pump jet weight	104	??	\$ 0		??
51	6415	\$ 3.6		Pump jet ball bearing	105		\$ 0		??

<https://www.carbparts.eu>

Prices and product availability are subject to change

