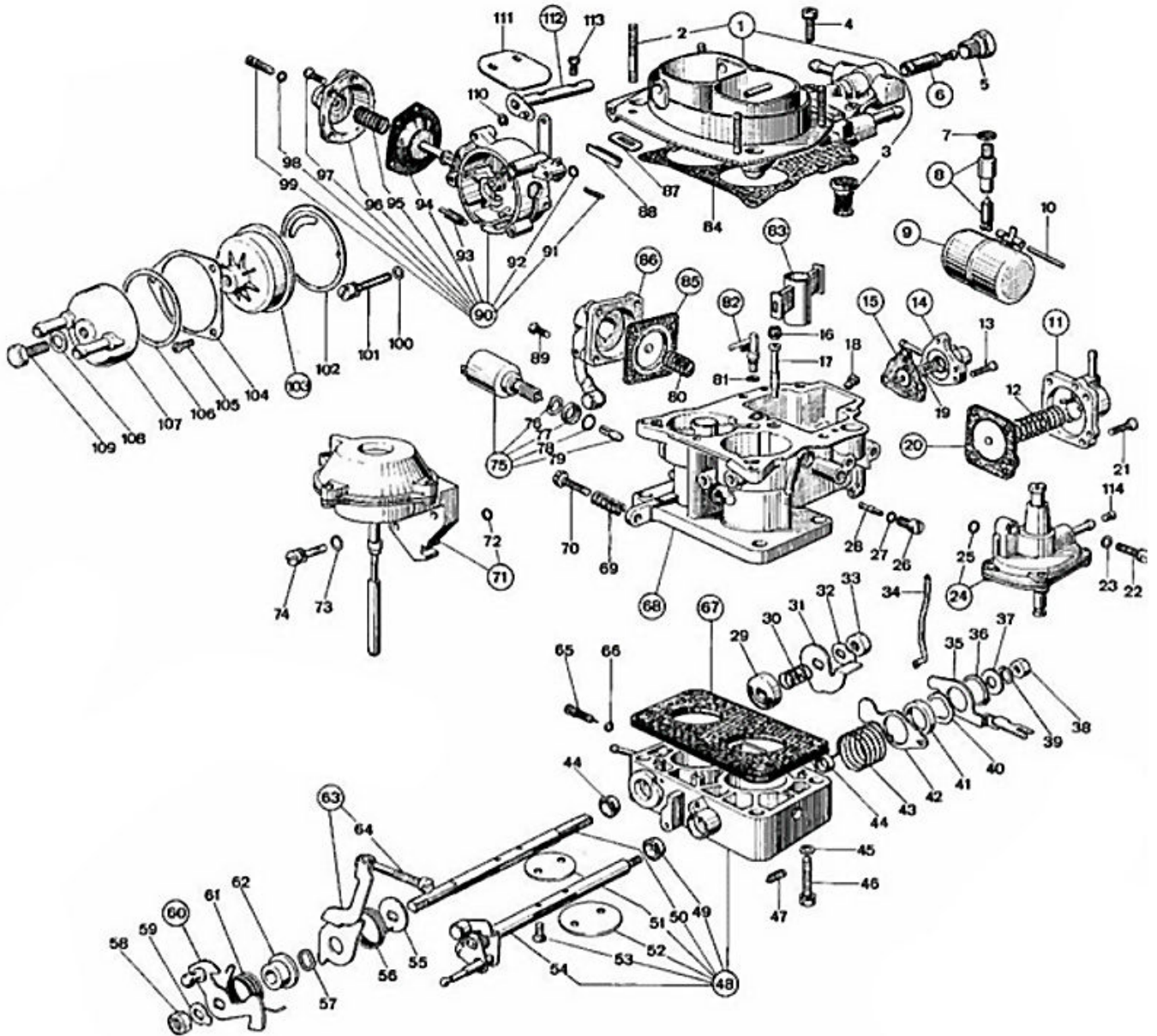


**CarbDeal**  
Selling carburetor parts since 2005



## WEBER 28/32 ADHA - exploded view



<https://www.carbparts.eu>

Prices and product availability are subject to change



**CarbDeal**  
Selling carburetor parts since 2005



## WEBER 28/32 ADHA - Parts list

No	Part No	Price	Pcs	Description	No	Part No	Price	Pcs	Description
1	Not Serviced	€ 0	1	Top Cover	58	34715.014	€ 1	1	Throttle Shaft Fixing Nut
2	64955.007	€ 11.6	4	Top Cover Stud	59	55520.002	€ 1	1	Shaft Lock Tab
3	64372.009	€ 0	1	Plunger	60	45027.137	€ 0	1	Throttle Lever
4	64700.005	€ 0.5	6	Top Cover Fixing Screw	61	Not Serviced	€ 0	1	Spring
5	61002.019	€ 0	1	Plug	62	12775.075	€ 0	1	Bushing
6	37022.004	€ 7	1	Fuel Screen	63	45069.055	€ 0	1	Lever
7	83102.070	€ 1.6	1	Needle Valve Gasket	64	64590.010	€ 0	1	Screw
8	79510.000	€ 0	1	Needle & Seat	65	64750.051	€ 12	1	Mixture Screw
9	41015.004	€ 51.6	1	Brass Float	66	41565.010	€ 0	1	O-Ring
10	52000.015	€ 1.8	1	Float Pin	67	39152.019	€ 0	1	Flange
11	32486.085	€ 0	1	Auxillary Pump Cover	68	Not Serviced	€ 0	1	Carburetor Body
12	47407.250	€ 0	1	Auxillary Diaphragm Spring	69	47600.094	€ 2.2	1	Spring
13	64565.001	€ 0	3	Screw	70	64895.011	€ 0	1	Screw
14	32386.024	€ 0	1	Power Valve Cover	71	31800.047	€ 0	1	Capsule
15	47407.250	€ 0	1	Diaphragm	72	41565.008	€ 0.8	1	O-Ring
16	77201	€ 2.1	1	Air Corrector Jet	73	55510.034	€ 0.4	2	Washer
17	61440	€ 13.9	1	Emulsion Tube	74	64700.005	€ 0.5	2	Top Cover Fixing Screw
18	73801	€ 2.7	1	Main Jet	75	43903.055	€ 0	1	Idle Cut Off Solenoid
19	47600.171	€ 0	1	Spring	76	55530.016	€ 0	1	Wavy Washer
20	47407.163	€ 0	1	Diaphragm	77	58000.019	€ 0	1	Plate
21	64565.001	€ 0	4	Screw	78	41565.001	€ 0	1	O-Ring
22	64700.001	€ 0.5	2	Screw	79	74409	€ 3.1	1	Idle Jet
23	55510.018	€ 0	2	Washer	80	47600.092	€ 0	1	Pump Loading Spring
24	31800.046	€ 0	1	Capsule	81	41565.001	€ 0	1	O-Ring
25	41565.008	€ 0.8	1	O-Ring	82	76407	€ 12.4	1	Pump Jet
26	52570.006	€ 6.2	1	Idle Jet Holder	83	70508.450	€ 0	1	Auxiliary Venturi
27	41565.002	€ 0.4	1	O-Ring For Idle Jet Holder	84	41705.049	€ 0	1	Top Cover Gasket
28	74403	€ 2.5	1	Idle Jet	85	47407.118	€ 32	1	Diaphragm
29	50002.008	€ 7.6	1	Shaft Bushing	86	32486.069	€ 0	1	Accelerator Pump Cover
30	47600.027	€ 0	1	Bush Retaining Spring	87	52135.018	€ 2.9	1	Dust Seal Plate
31	Not Serviced	€ 0	1	Lever	88	61070.002	€ 2.9	1	Dust Seal Plug
32	55520.004	€ 1	1	Shaft Lock Tab	89	64565.001	€ 0	4	Screw
33	34710.003	€ 1	1	Throttle Spindle Nut	90	57804.321	€ 0	1	Starting Device
34	Not Serviced	€ 0	1	Rod Arm	91	Not Serviced	€ 0	1	Spring
35	Not Serviced	€ 0	1	Lever	92	41565.008	€ 0.8	1	O-Ring
36	10140.304	€ 0	1	Spring Ring	93	47605.031	€ 0	1	Spring
37	55510.081	€ 1.9	1	Washer	94	47407.149	€ 0	1	Diaphragm
38	34705.001	€ 0.8	1	Nut	95	47600.092	€ 0	1	Pump Loading Screw
39	55525.003	€ 0	1	Lock Washer	96	32384.039	€ 37.2	1	Cover
40	12750.103	€ 0	1	Washer	97	64560.004	€ 0	3	Screw
41	12750.103	€ 0	1	Bushing	98	41565.01	€ 0	1	O-Ring
42	Not Serviced	€ 0	1	Spring Retainer	99	64895.010	€ 0	1	Screw
43	47610.102	€ 0	1	Spring	100	55510.034	€ 0.4	2	Washer
44	41575.010	€ 3.1	2	Bushing	101	64695.021	€ 2.3	2	Top Cover Screw (Long)
45	55510.034	€ 0.4	2	Washer	102	41640.052	€ 2.9	1	Auto Choke Body Gasket
46	64700.016	€ 0	2	Screw	103	57804.298	€ 0	1	Choke Element
47	64595.013	€ 0	1	Screw	104	52135.029	€ 2.3	1	Choke Lock Ring
48	Not Serviced	€ 0	1	Lower Body	105	64615.004	€ 0	3	Screw
49	41575.010	€ 3.1	1	Bushing	106	41555.001	€ 0.4	1	Water Cover Gasket
50	Not Serviced	€ 0	1	Primary Throttle Shaft	107	32444.011	€ 0	1	Water Choke Cover
51	Not Serviced	€ 0	1	Primary Throttle Plate	108	41530.002	€ 1.8	1	Gasket
52	Not Serviced	€ 0	1	Secondary Throttle Plate	109	64610.008	€ 0	1	Screw
53	64520.027	€ 0.6	4	Screw	110	10140.501	€ 1.6	1	Spring Ring
54	Not Serviced	€ 0	1	Secondary Throttle Shaft	111	64010.034	€ 0	1	Throttle Valve
55	55555.054	€ 0	1	Washer	112	10015.274	€ 12.1	1	Choke Shaft
56	47610.144	€ 0	1	Spring	113	64525.003	€ 0	2	Choke Plate Fixing Screw
57	55530.002	€ 3	1	Wavy Washer					

<https://www.carbparts.eu>

Prices and product availability are subject to change

