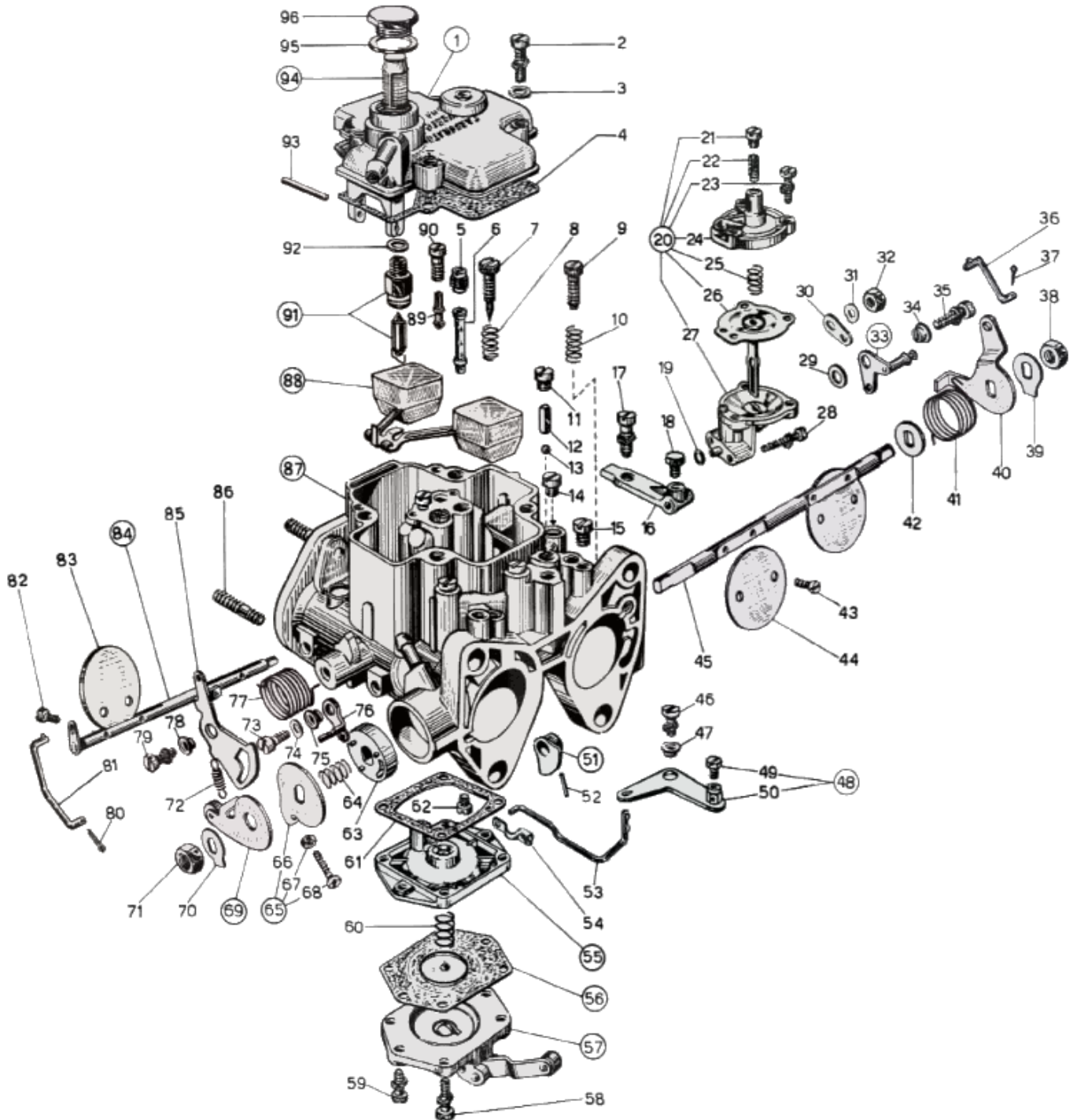


CarbDeal
Selling carburetor parts since 2005

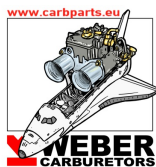


WEBER 32 DCOF 6 - exploded view



<https://www.carbparts.eu>

Prices and product availability are subject to change



CarbDeal
Selling carburetor parts since 2005



WEBER 32 DCOF 6 - Parts list

No	Part No	Price	Pcs	Description	No	Part No	Price	Pcs	Description
1	31736.005	£ 0	1	Carburetor top cover	49	64615.004	£ 0	1	- Screw securing wire
2	64700.005	£ 0.5	4	Top Cover Fixing Screw	50	45096.021	£ 0	1	— Leva a squadra
3	55510.034	£ 0.4	4	Spring Washer	51	14852.004	£ 0	1	Pump Cam
4	41705.030	£ 0	1	Carburettor Cover Gasket	52	58445.001	£ 0.4	1	Fixing Pin
5	41360.001	£ 1.8	2	Air bleed jet	53	61280.039	£ 0	1	Tirantino comando avviamento
6	61440.515	£ 0	2	Emulsion Tube	54	47670.002	£ 4.2	1	Compression Spring
7	64750.001	£ 2.2	1	Idle Mixture Screw	55	47407.039	£ 0	1	Pump diaphragm
8	47600.007	£ 1.9	1	Idle Mixture Screw Spring	56	39174.009	£ 0	1	Flangia pompa
9	64590.002	£ 7.9	1	Throttle Stop Screw	57	32486.025	£ 0	1	Accelerator Pump Cover
10	47600.007	£ 0	1	Idle Mixture Screw Spring	58	64700.019	£ 0	4	Pump Cover Screw
11	61015.006	£ 2.8	2	Pump Demand Valve Cover	59	64700.004	£ 1.7	2	Pump Cover Screw
12	52730.001	£ 2.8	2	Pump Valve Weight	60	47600.107	£ 5.4	1	Pump Spring
13	58300.001	£ 0.7	2	Pump Valve Ball	61	41640.019	£ 4.7	1	Guarnizione per flangia pompa
14	61015.006	£ 2.8	2	Pump Demand Valve Cover	62	41120.001	£ 2.3	2	Main jet
15	61015.004	£ 6	1	Inspection Screw	63	50002.004	£ 0	1	Shaft Bushing
16	58700.022	£ 0	1	Choke Cable Bracket	64	47600.027	£ 3.2	1	Bush retaining spring
17	64700.003	£ 0	1	Lever Fixing Screw	65	45082.007	£ 0	1	Leva registro minimo veloce comprendente
18	64605.017	£ 1.5	1	Choke Cable Clamp	66	45080.012	£ 0	1	— Throttle Lever
19	41565.008	£ 0.6	1	O ring	67	34705.002	£ 0	1	— Cold Start Nut
20	57804.021	£ 0	1	Dispositivo di sgolfamento comprendente	68	64520.028	£ 0	1	Throttles adjusting screw
21	61015.003	£ 0	1	— Tappo	69	45082.006	£ 0	1	Fast idling loose lever
22	64595.005	£ 7.9	1	— Diaphragm adjusting screw	70	55520.003	£ 0	1	Shaft Lock Tab
23	64700.004	£ 1.7	3	Pump Cover Screw	71	34710.003	£ 0.9	1	Throttle Spindle Nut
24	32384.009	£ 0	1	— Coperchio sceto la	72	47605.006	£ 0	1	Spindle return spring
25	47600.070	£ 0	1	— Diaphragm loading spring	73	64520.029	£ 0	1	Fixing Screw
26	47407.040	£ 25.3	1	— Membrana completa	74	55530.008	£ 3.2	1	Spring Ring
27	57804.022	£ 0	1	— Scatola con boccia	75	12775.010	£ 7.6	1	Bushing For Lever
28	64700.010	£ 0	2	Fixing Screw	76	45032.104	£ 0	1	Choke Lever
29	55510.013	£ 0	1	Rosetta per leva	77	47610.003	£ 4.2	1	Choke lever return spring
30	45025.098	£ 0	1	Lever	78	12775.010	£ 7.6	1	Bushing For Lever
31	55530.008	£ 3.2	1	Spring Ring	79	64700.012	£ 2.4	1	Lever Fixing Screw
32	34715.006	£ 0	1	— Cold Start Nut	80	32610.006	£ 0	1	— Spilt pin
33	45103.019	£ 0	1	Lever	81	61280.040	£ 0	1	Tie rod
34	12775.010	£ 7.6	1	Bushing For Lever	82	64525.003	£ 0	4	Choke plate fixing screw
35	64700.012	£ 2.4	1	Lever Fixing Screw	83	64005.012	£ 0	2	Choke throttle valve
36	61280.066	£ 0	1	Tirantino comando sgolfamento	84	10020.217	£ 0	1	Choke shaft
37	32610.006	£ 0	1	— Spilt pin	85	45200.033	£ 0	1	Lever
38	34715.014	£ 0.9	1	Throttle Spindle Nut	86	64955.104	£ 0	4	Stud
39	55520.002	£ 0.9	1	Shaft Lock Tab	87	64520.092	£ 0	1	Carburetor Body
40	45032.058	£ 0	1	Throttles control lever	88	41030.006	£ 0	1	Float
41	47610.071	£ 3.3	1	Throttle Return Spring	89	41160.003	£ 2.2	2	Idle jet
42	55555.019	£ 1.3	1	Shaft Spacer	90	52570.003	£ 12.8	2	Idle Jet Holder
43	64520.024	£ 0	4	Throttle Plate Screw	91	64240.008	£ 0	1	Float valve
44	64005.092	£ 0	2	Throttle Valve	92	41535.015	£ 0	1	Needle valve gasket
45	10006.409	£ 0	1	Primary Throttle Shaft - Oversized	93	52000.015	£ 1.5	1	Float pivot
45	10005.411	£ 20.8	1	Throttle Shaft	94	37022.002	£ 3.2	1	Filter element
46	64700.012	£ 2.4	1	Lever Fixing Screw	95	41530.024	£ 0	1	Fuel Filter Gasket
47	12775.010	£ 7.6	1	Bushing For Lever	96	61002.010	£ 0	1	Tappo ispezione filtro
48	45096.022	£ 0	1	Leva a squadra comprendente					

<https://www.carbparts.eu>

Prices and product availability are subject to change

