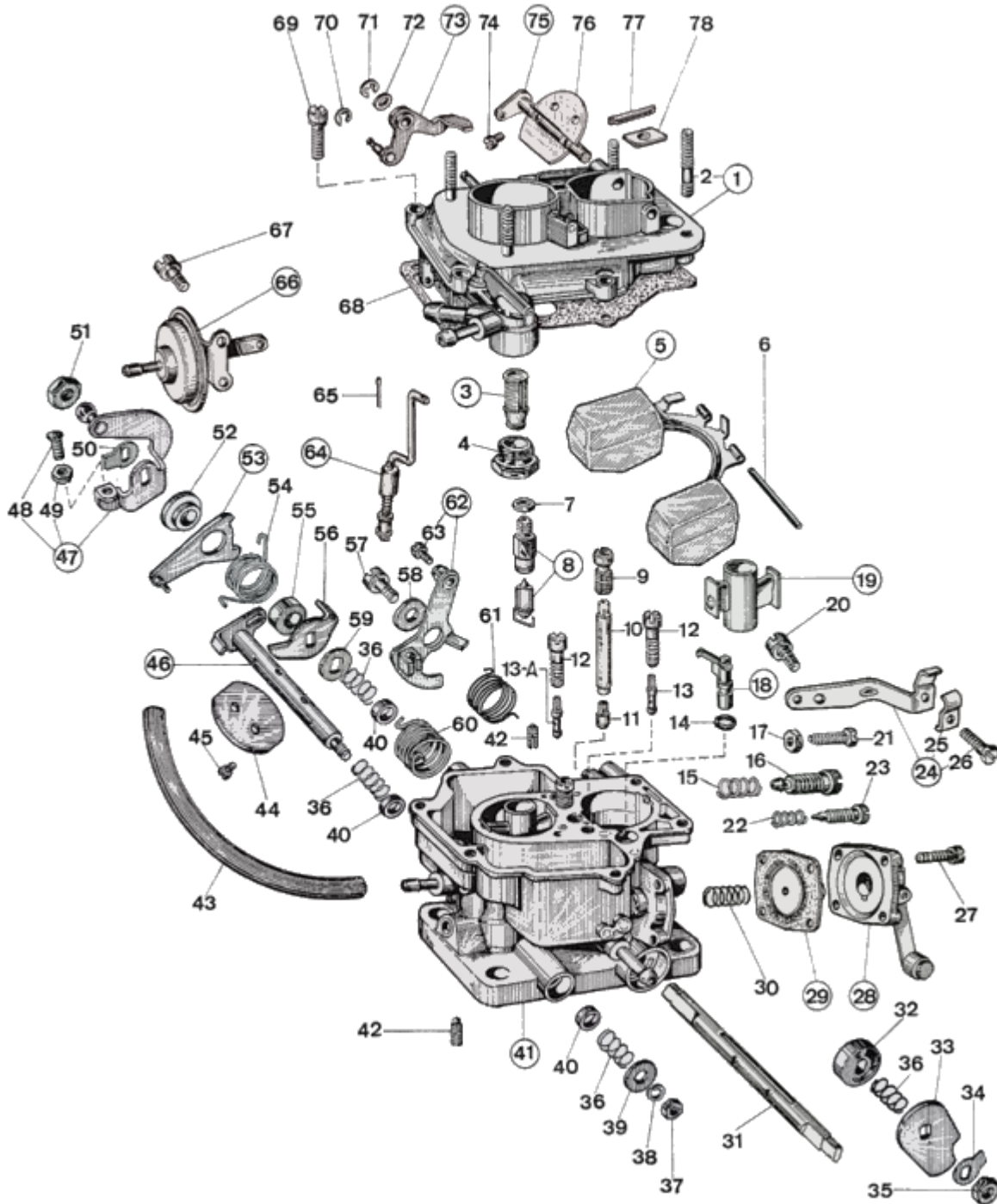




## WEBER 32 DMTR 20 - exploded view



<https://www.carbparts.eu>

Prices and product availability are subject to change



**CarbDeal**  
Selling carburetor parts since 2005



## WEBER 32 DMTR 20 - Parts list

No	Part No	Price	Pcs	Description	No	Part No	Price	Pcs	Description
1	31716.173	£ 0	1	Carburetor cover Assy, including:	39	55510.081	£ 1.7	1	Washer For Shaft
2	64960.008	£ 0	4	— Stud	40	12750.085	£ 2.3	3	Bushing
3	37022.002	£ 3.2	1	Filter element	41		£ 0	1	Carburettor body
4	61002.018	£ 6.5	1	Fuel Filter Cover	42	64595.013	£ 0	2	Secondary throttle adjusting screw
5	41030.012	£ 0	1	Float	43	61400.018	£ 0	1	Pneumatic pump connecting pipe
6	52000.036	£ 1.6	1	Float Fulcrum Pin	44	64005.090	£ 13.3	2	Throttle Valve
7	41535.015	£ 0	1	Needle valve gasket	45	64520.027	£ 0.5	4	Throttle plate screw
8	64240.008	£ 0	1	Float valve	46	10016.207	£ 0	1	Secondary Throttle Shaft Oversized
9	41370.001	£ 4.3	1	Emulsion tube holder air corrector	46	10015.255	£ 0	1	Secondary Throttle Shaft
9	41370.001	£ 4.3	1	Emulsion tube holder air corrector	47	45041.071	£ 0	1	Leva comando farfalla completa di:
10	61450.229	£ 22.5	2	Emulsion Tube	48	64595.009	£ 0	1	— Screw
11	41115.003	£ 2.9	1	Main jet	49	34715.006	£ 0	1	— Cold Start Nut
11	41115.801	£ 0	1	Main jet	50	55520.002	£ 0.9	1	Shaft Lock Tab
12	52570.004	£ 5.8	2	Idle Jet Holder	51	34715.014	£ 0.9	1	Throttle Spindle Nut
13	41160.823	£ 0	1	Idle jet	52	12775.053	£ 0	1	Bushing
13-A	41160.003	£ 2.2	1	Idle jet	53	45069.015	£ 0	1	Lever
14	41565.001	£ 0	1	Pump Jet 'O' Ring	54	47610.092	£ 4.3	1	Spindle return spring
15	47600.097	£ 0	1	Compression Spring	55	12750.087	£ 0	1	Bushing
16	64750.027	£ 17.7	1	Idling adjustment screw	56	45136.052	£ 0	1	Lever
17	34705.001	£ 0.7	1	Nut	57	64700.012	£ 2.4	1	Lever Fixing Screw
18	41254.008	£ 10.7	1	Pump jet	58	55510.002	£ 1.2	1	Spring Washer
19	31966.017	£ 0	2	Auxiliary venturi	59	55555.019	£ 1.2	1	Shaft Spacer
20	64700.012	£ 2.4	1	Lever Fixing Screw	60	47610.091	£ 0	1	Choke lever return spring
21	64625.012	£ 4.7	1	Throttle Adjustment Screw	61	47610.058	£ 0	1	Lever return spring
22	47600.007	£ 1.9	1	Idle Mixture Screw Spring	62	45202.069	£ 20	1	Choke Lever
23	64755.009	£ 0	1	Idle Mixture Screw	63	64615.004	£ 0	1	- Screw securing wire
24	58702.029	£ 0	1	Sheat support Assy, including:	64	61287.023	£ 0	1	Choke rod
25	52145.004	£ 0	1	- Sheat securing plate	65	32610.005	£ 1.2	1	Spilt pin
26	64615.007	£ 0	1	- Screw securing wire	66	57804.107	£ 0	1	Dispositivo di sgolfamento
27	64700.006	£ 0	4	Pump Cover Screw	67	64700.012	£ 2.4	2	Lever Fixing Screw
28	32486.047	£ 0	1	Accelerator Pump Cover	68	41705.039	£ 0	1	Carburettor Cover Gasket
29	47407.050	£ 6.9	1	Pump diaphragm	69	64700.005	£ 0.4	6	Top Cover Fixing Screw
30	47600.107	£ 5.4	1	Pump Spring	70	10140.501	£ 1.4	1	Locking Ring
31	10001.209	£ 0	1	Primary Throttle Shaft - Oversized	71	10140.502	£ 1.8	1	Locking Ring
31	10000.241	£ 0	1	Primary Throttle Shaft	72	55510.034	£ 0.4	1	Spring Washer
32	50002.008	£ 6.6	1	Shaft Bushing	73	45069.017	£ 0	1	Lever
33	14850.077	£ 38.5	1	Pump Cam	74	64525.003	£ 0	2	Choke plate fixing screw
34	55520.004	£ 0.9	1	Throttle Shaft Lock Washer	75	10015.256	£ 0	1	Choke shaft
35	34710.003	£ 0.9	1	Throttle Spindle Nut	76	64010.029	£ 0	1	Choke throttle valve
36	47600.027	£ 0	4	Bush retaining spring	77	61070.002	£ 2.5	1	Dust seal plug
37	34705.001	£ 0.7	1	Nut	78	52135.010	£ 2.5	1	Dust seal plate
38	55525.001	£ 0	1	Spring Washer					

<https://www.carbparts.eu>

Prices and product availability are subject to change

