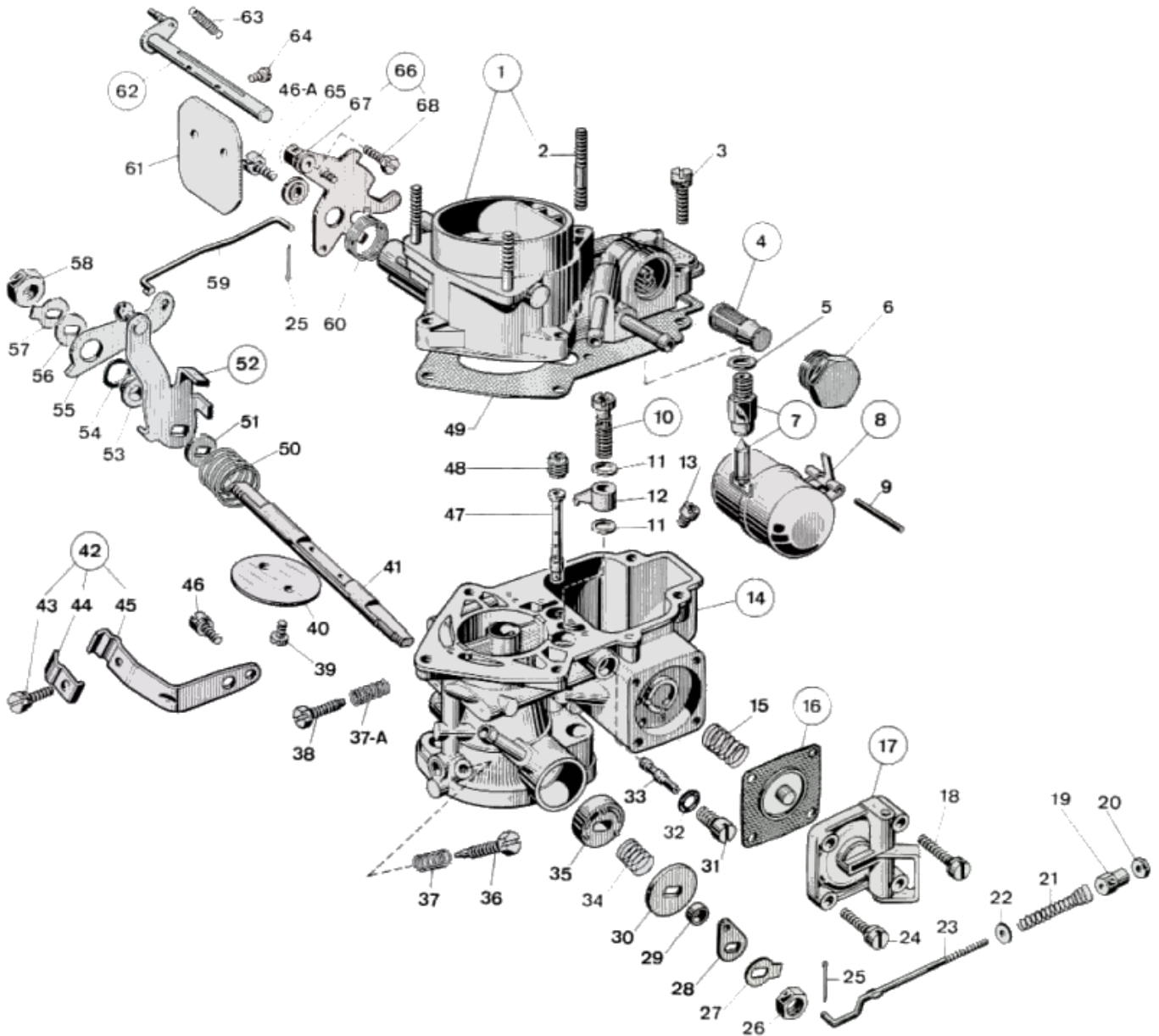




WEBER 32 IBA 20 - exploded view



<https://www.carbparts.eu>

Prices and product availability are subject to change



CarbDeal
Selling carburetor parts since 2005



WEBER 32 IBA 20 - Parts list

| No | Part No | Price | Pcs | Description | No | Part No | Price | Pcs | Description |
|----|-----------|--------|-----|-----------------------------------|------|-----------|--------|-----|------------------------------------|
| 1 | 31706.035 | € 0 | 1 | Carburetor cover Assy, including: | 36 | 64755.009 | € 0 | 1 | Idle Mixture Screw |
| 2 | 64960.002 | € 0 | 3 | Stud | 37 | 47600.007 | € 2.2 | 1 | Idle Mixture Screw Spring |
| 3 | 64700.005 | € 0.5 | 5 | Top Cover Fixing Screw | 37-A | 47600.007 | € 2.2 | 1 | Idle Mixture Screw Spring |
| 4 | 37022.002 | € 3.7 | 1 | Filter element | 38 | 64625.012 | € 5.4 | 1 | Throttle Adjustment Screw |
| 5 | 41535.015 | € 0 | 1 | Needle valve gasket | 39 | 64520.023 | € 2.8 | 2 | Throttle Plate Screw |
| 6 | 61002.018 | € 7.5 | 1 | Fuel Filter Cover | 40 | 64005.092 | € 0 | 1 | Throttle Valve |
| 7 | 64240.008 | € 0 | 1 | Float valve | 41 | 10000.481 | € 0 | 1 | Throttle Shaft |
| 8 | 41015.011 | € 0 | 1 | Float | 41 | 10001.469 | € 0 | 1 | Primary Throttle Shaft - Oversized |
| 9 | 52000.010 | € 1.8 | 1 | Float Fulcrum Pin | 42 | 58702.022 | € 0 | 1 | Sheat support Assy, including: |
| 10 | 64290.015 | € 0 | 1 | Valve | 43 | 64615.007 | € 0 | 1 | - Screw securing wire |
| 11 | 41530.012 | € 0 | 2 | Pump jet gasket | 44 | 52145.001 | € 0 | 1 | Sheat securing plate |
| 12 | 41252.019 | € 0 | 1 | Pump jet | 45 | 58700.026 | € 0 | 1 | — Sheat Support |
| 13 | 41120.001 | € 2.7 | 1 | Main jet | 46-A | 64700.014 | € 0.9 | 1 | Lever Fixing Screw |
| 14 | - | € 0 | 1 | Carburetor Body | 46 | 64700.012 | € 2.8 | 1 | Lever Fixing Screw |
| 15 | 47600.107 | € 6.3 | 1 | Pump Spring | 47 | 61440.323 | € 13.9 | 1 | Emulsion Tube |
| 16 | 47407.042 | € 34.1 | 1 | Pump diaphragm | 48 | 41360.001 | € 0 | 1 | Air bleed jet |
| 17 | 32486.032 | € 0 | 1 | Accelerator Pump Cover | 49 | 41700.023 | € 0 | 1 | Carburettor Cover Gasket |
| 18 | 64700.019 | € 0 | 2 | Pump Cover Screw | 50 | 47610.070 | € 6.2 | 1 | Throttle Return Spring |
| 19 | 12800.166 | € 8.8 | 1 | Boccola per tirantino pompa | 51 | 55555.016 | € 1.9 | 1 | Shaft Spacer |
| 20 | 34710.009 | € 0 | 1 | Fixing nut | 52 | 45048.016 | € 0 | 1 | Throttle Valve Control Lever |
| 21 | 47600.138 | € 0 | 1 | Pump rod spring | 53 | 12775.027 | € 8.8 | 1 | Bushing For Lever |
| 22 | 55510.019 | € 1.2 | 1 | Spring Washer | 54 | 55530.002 | € 3 | 1 | Wavy Washer |
| 23 | | € 0 | | | 55 | 45032.122 | € 0 | 1 | Fast idling loose lever |
| 24 | 64700.004 | € 2 | 2 | Pump Cover Screw | 56 | 55555.003 | € 1.9 | 1 | Washer For Shaft |
| 25 | 32610.005 | € 1.4 | 2 | Spilt pin | 57 | 55520.002 | € 1 | 1 | Shaft Lock Tab |
| 26 | 34710.003 | € 1 | 1 | Throttle Spindle Nut | 58 | 34715.014 | € 1 | 1 | Throttle Spindle Nut |
| 27 | 61285.013 | € 0 | 1 | Pump Rod | 59 | 61280.080 | € 0 | 1 | Choke Control Rod |
| 27 | 55520.004 | € 1 | 1 | Throttle Shaft Lock Washer | 60 | 47610.003 | € 4.9 | 1 | Choke lever return spring |
| 28 | 45025.109 | € 3.6 | 1 | Pump Cam | 61 | 64010.021 | € 0 | 1 | Choke throttle valve |
| 29 | 12750.025 | € 0 | 1 | Shaft Distance Piece | 62 | 10015.230 | € 0 | 1 | Choke shaft |
| 30 | 55555.010 | € 1.7 | 1 | Washer For Shaft | 63 | 47605.026 | € 0 | 1 | Spindle return spring |
| 31 | 52570.006 | € 6.2 | 1 | Idle Jet Holder | 64 | 64525.003 | € 0 | 2 | Choke plate fixing screw |
| 32 | 41565.002 | € 0.4 | 1 | O-Ring For Idle Jet Holder | 65 | 12775.055 | € 10.8 | 1 | Bushing For Lever |
| 33 | 41160.003 | € 2.5 | 1 | Idle jet | 66 | 45202.054 | € 0 | 1 | Lever |
| 34 | 47800.027 | € 0 | 1 | Bush retaining spring | 67 | 45202.053 | € 0 | 1 | — Throttle Lever |
| 35 | 50002.005 | € 7.6 | 1 | Shaft Bushing | 68 | 64615.004 | € 0 | 1 | - Screw securing wire |

<https://www.carbparts.eu>

Prices and product availability are subject to change

